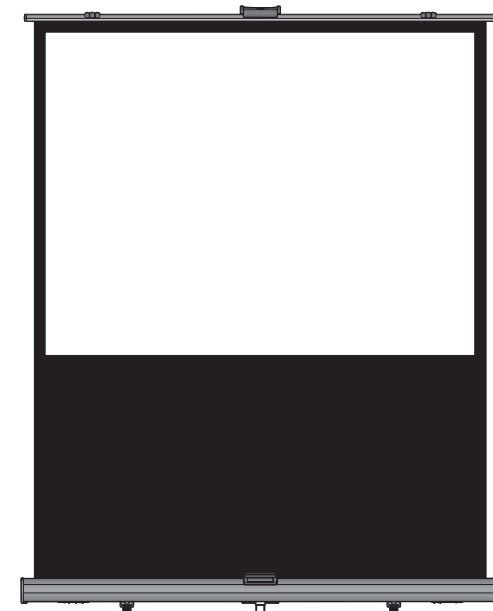




Installation Guide for Portable Pro Series Screen



Technical Assistance

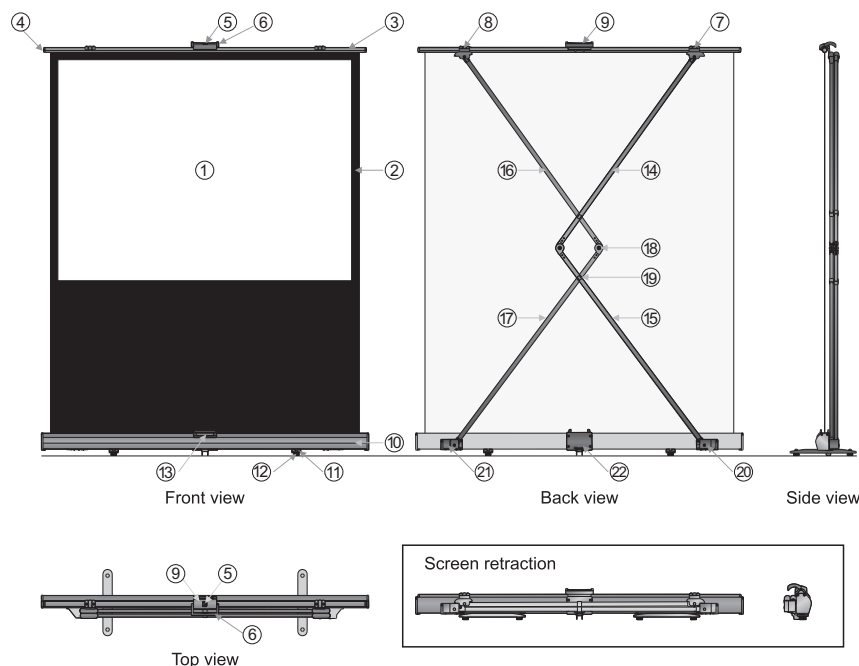
If you need help with installing this screen please visit
www.sapphireav.com

RoHS

Thank you for purchasing a Sapphire projection screen - "like being there"
Before use, please read instructions carefully. After installation/use, store instructions for future reference.

Description

Illustration



Part name

①	Fabric	⑫	Foot wheel
②	Fabric black border	⑬	Front base
③	Semicircle tube	⑭	Support lever
④	Rod	⑮	Support lever
⑤	Tube lock	⑯	Support lever
⑥	Handle	⑰	Support lever
⑦	Left bracket	⑱	Support lever joint
⑧	Right bracket	⑲	Support lever pipe
⑨	Handle base	⑳	Seat
⑩	Casing	㉑	Seat
⑪	Foot	㉒	Rear base

Warning

1. Don't open the screen fabric in windy conditions.
2. To preserve the screen fabric, remember:
 - a) Don't touch the screen surface with hands.
 - b) Don't write or draw on the screen surface.
 - c) Don't poke screen fabric with finger or edge tools.
 - d) Clean the fabric with soft cloth and lukewarm water. Don't use any detergent or any diluent cleanser.
3. Lift up and retract the screen with even speed and force.
4. Retract fabric into the casing after display.
5. When retracting the screen, make sure the support lever joint is fastened into the support lever pipe.
6. Make sure the handle base is fastened and locked before carry.
7. In case of damage, the screen is recommended to be managed and operated by adults.



Ignoring the safety warnings may lead to injuries and/or damaging the product.



Retract the screen after every use. Leave it hanging for a long period may cause screen fabric loose



Avoid hanging anything on the screen as it may cause the screen to fall down.



Please contact your local dealer for repairs or maintenance. During the 3 year warranty you must not unscrew any part without authorisation or you will void the warranty.

Do not take apart and replace with unknown parts. If there are any problems, please contact your local dealer. Product specifications are subject to change.

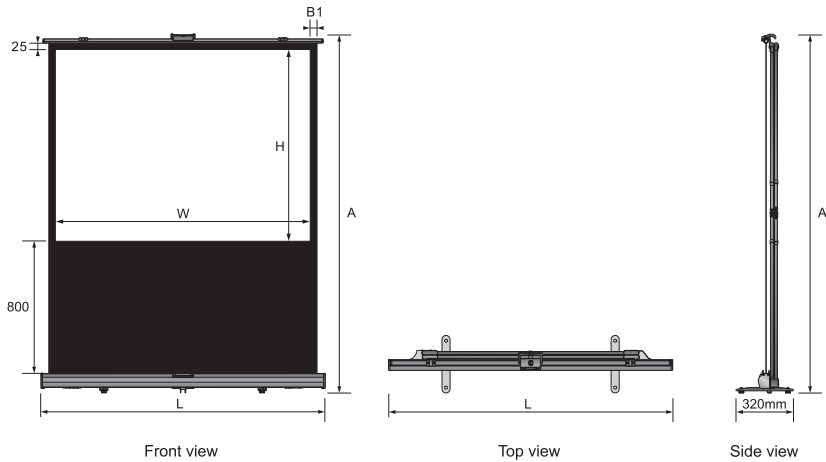
Warranty Terms (UK, EMEA)

Your Sapphire screen has a class leading 3 year warranty. During the first 30 days after delivery all faulty products will be swapped for a new unit. After that the warranty will be return to base which will be an address in your country. Repairs will generally be returned within seven working days. Please contact your supplying dealer for clarification of these terms.

Specifications

Format	Model	Specification (In)	Viewing area		Screen dimension		B1 (mm)	Net weight (kg)
			W (mm)	H (mm)	L (mm)	A (mm)		
4:3	CB-U70	70"	1422	1067	1582	2400	35	
	CB-U80	80"	1625	1220	1785	2553	35	
16:9	CB-U70	70"	1550	871	1710	2204	35	
	CB-U80	80"	1770	995	1916	2328	28	

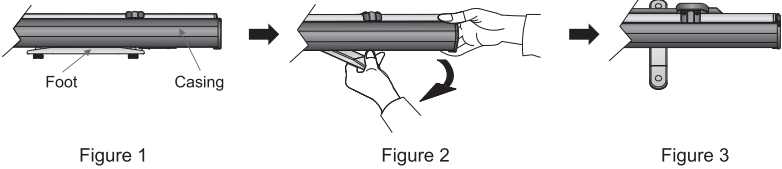
Note: Sizes and specifications are subject to change at any time. Refer to real product for exact data.
The tolerance for L is ± 5 mm.



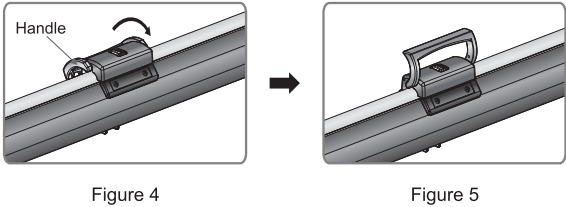
Measurement unit: mm

Open Screen

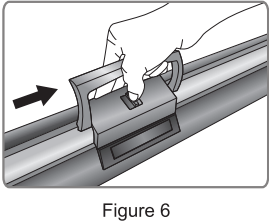
1. Put the screen on the ground, in a proper position facing the projector. Turn the feet out until they are perpendicular to the screen casing (Figure 1 - 3).



2. Pull up the handle as the arrow indicates below (Figure 4 - 5).



3. Pull up the handle while using the thumb to release the tube lock as arrow indicates (Figure 6).



4. Pull up the screen with constant speed and stop at desired position for three minutes so that the screen can be installed (Figure 7 - 10).

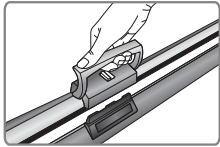


Figure 7

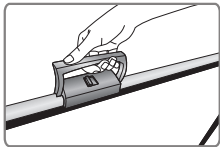


Figure 8

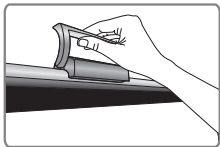


Figure 9

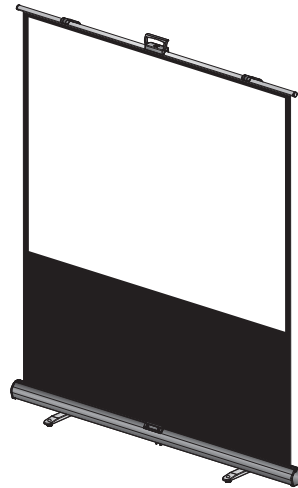


Figure 10

5. Adjust the foot wheel when the ground is not even. Clockwise rotation raises the foot while counter clockwise rotation lowers the foot, with limits of five circles or within 8mm (Figure 11 - 12).

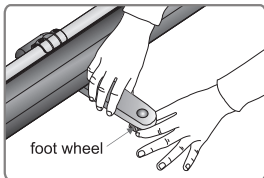


Figure 11

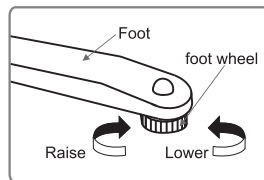


Figure 12

1. Grasp the handle and retract the screen into the casing till the handle base is firmly fastened in the tube lock (Figure 13 - 15).

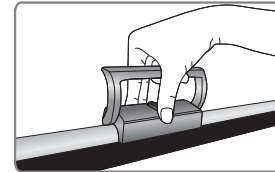


Figure 13

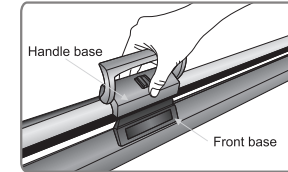


Figure 14

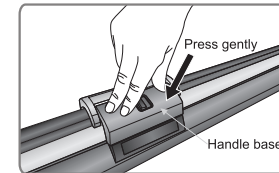


Figure 15

2. Rotate the feet in line with the casing. Retraction is completed (Figure 16 - 18).

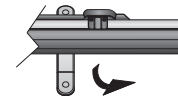


Figure 16

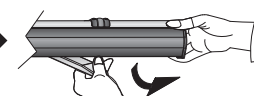


Figure 17

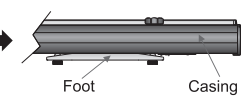


Figure 18