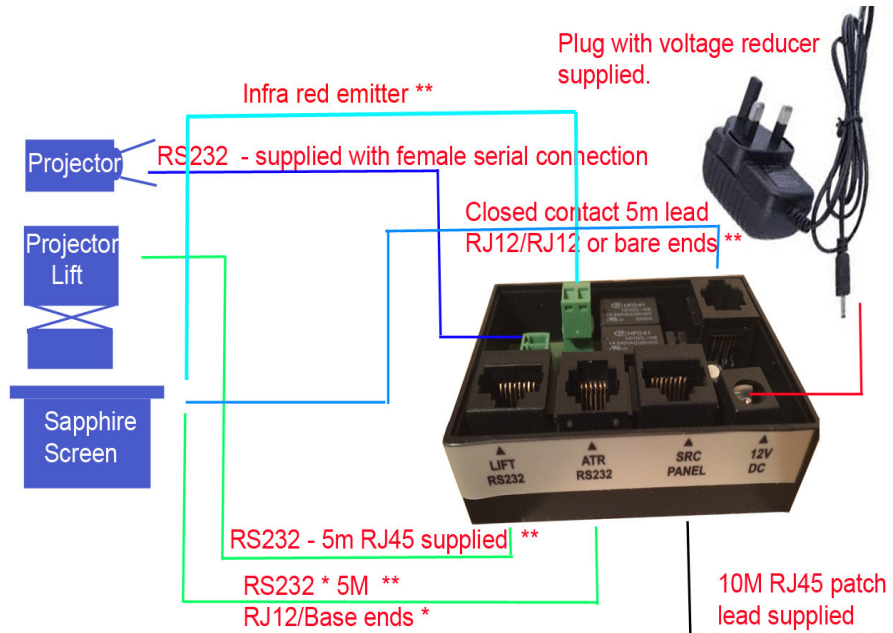


# Control Pro Range - We program so you don't have to!



The control panel is powered from the breakout box via the standard 10M Cat 5 cable supplied.

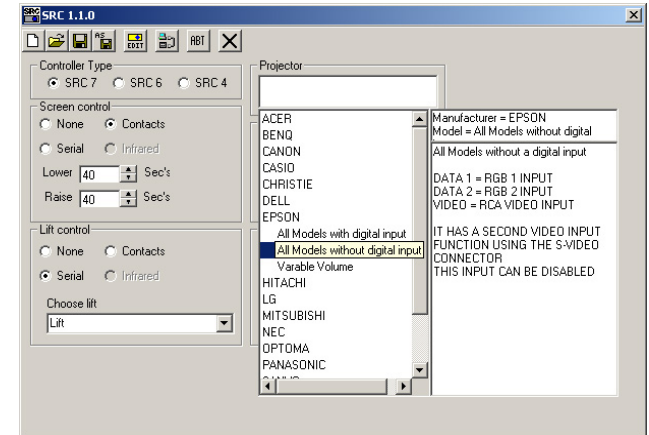


## SOFTWARE

Should you have a need to change anything on site you can download the small software program from [www.sapphireav.com](http://www.sapphireav.com).

Either pick off the items to change or in the case of projectors input your own RS232 codes if they are not in our database.

\* You will need a USB to serial converter with a male serial plug to program the unit.



\* There are only 2 x RS232 ports so if you use a lift the closed contact should be used for the screen

\*\* Only the leads required for type of screen ordered will be included.



Imagine being able to turn up to install a control system and all you had to do was plug in the wires and press a button!

Imagination is now reality with the Sapphire Control units. There are two versions - either SRC6 (one projector data button) or SRC7 (two projector data buttons). All you need to tell your distributor at the time of ordering is the projector you will be using and we will program the unit ready for you. If you take the audio out of the projector you can control your sound as well.

[WWW.SAPPHIREAV.COM](http://WWW.SAPPHIREAV.COM)


This is a UK manufactured product