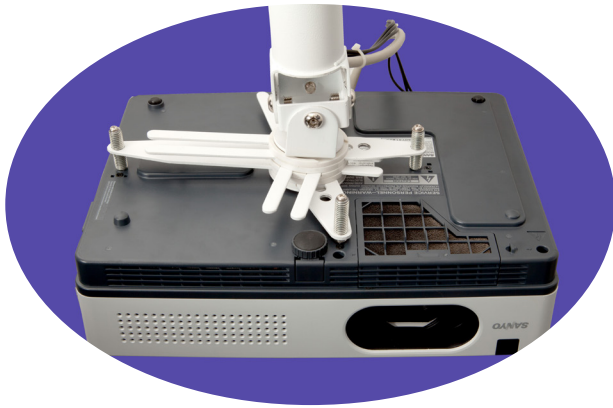


Universal Projector mount with 1200mm pole Product code - SAPUM1500

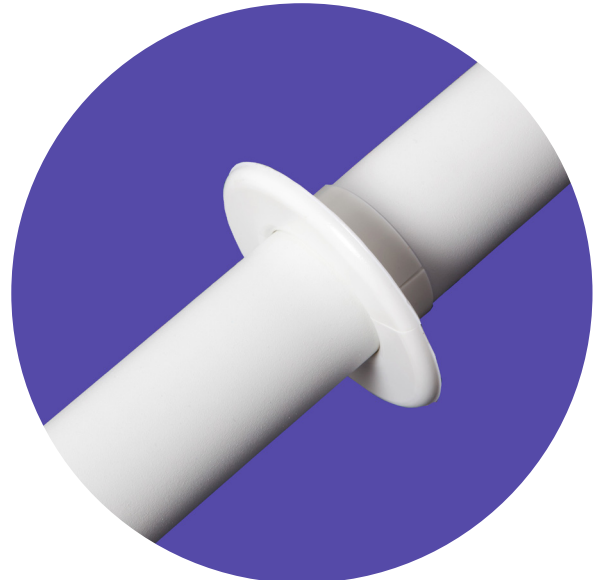
Don't judge a book by it's cover is a saying that certainly applies to this mount! It is designed to overcome most of the issues that face installers on a day to day basis and should be the only mount you will need in 90% of installations.

Designed with flexibility in mind for those times when you realise that to get the picture perfect you need to move the projector an inch or two. Slackening the central bolt you can adjust the position without having to take the projector down. The images below give some idea of the flexibility.



Sloping ceilings or beam mount - no problem with the included attachment.

We include a plastic ceiling trim in each box for a professional image when through ceiling installation



We include a range of fittings to suit 95% of the projectors on the market - so you will not have to go looking for other fittings to hang your projector. There is even a security allen key





Universal Projector mount with 1200mm pole

Product code - SAPUM1500

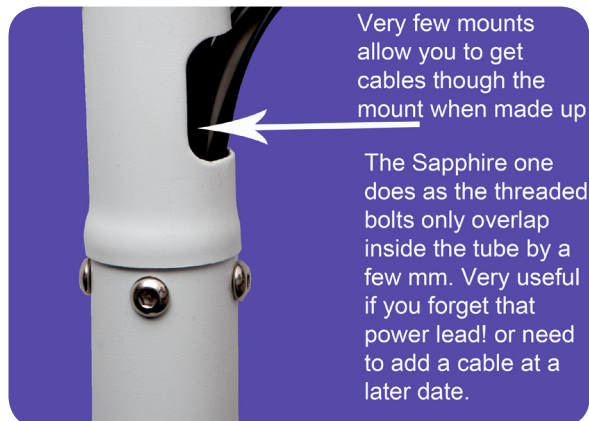
Designed to be easier to cut and look better than many other products on the market.



Using either a saw or a thin blade grinder you can achieve a straight cut by using the template supplied.

The template has three holes for lining up the top holes when cut. Simply turn around to align with the others and drill the fourth hole.

Many other mounts leave the cut edge showing. This one is hidden under the clever expanded joint as below.



Smart white powder coating finish.

3 year warranty

Can also be used for close fitting to the ceiling with no drop bar

The distance from the top plate to the top of the projector is 1345mm without the attachment for sloping ceilings or 1400mm with this.

Optional extension poles available

SAPUM1MEX = 1 metre and SAPUM2MEX = 2 metre.

Sapphire AV Manufacturing Limited
Units 8,9 and 11
Wern Trading Estate
Newport
NP10 9FQ
www.sapphireav.com

Dealers Name